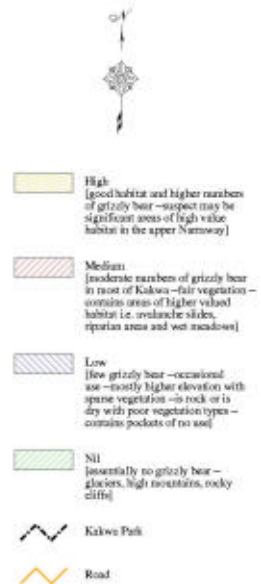
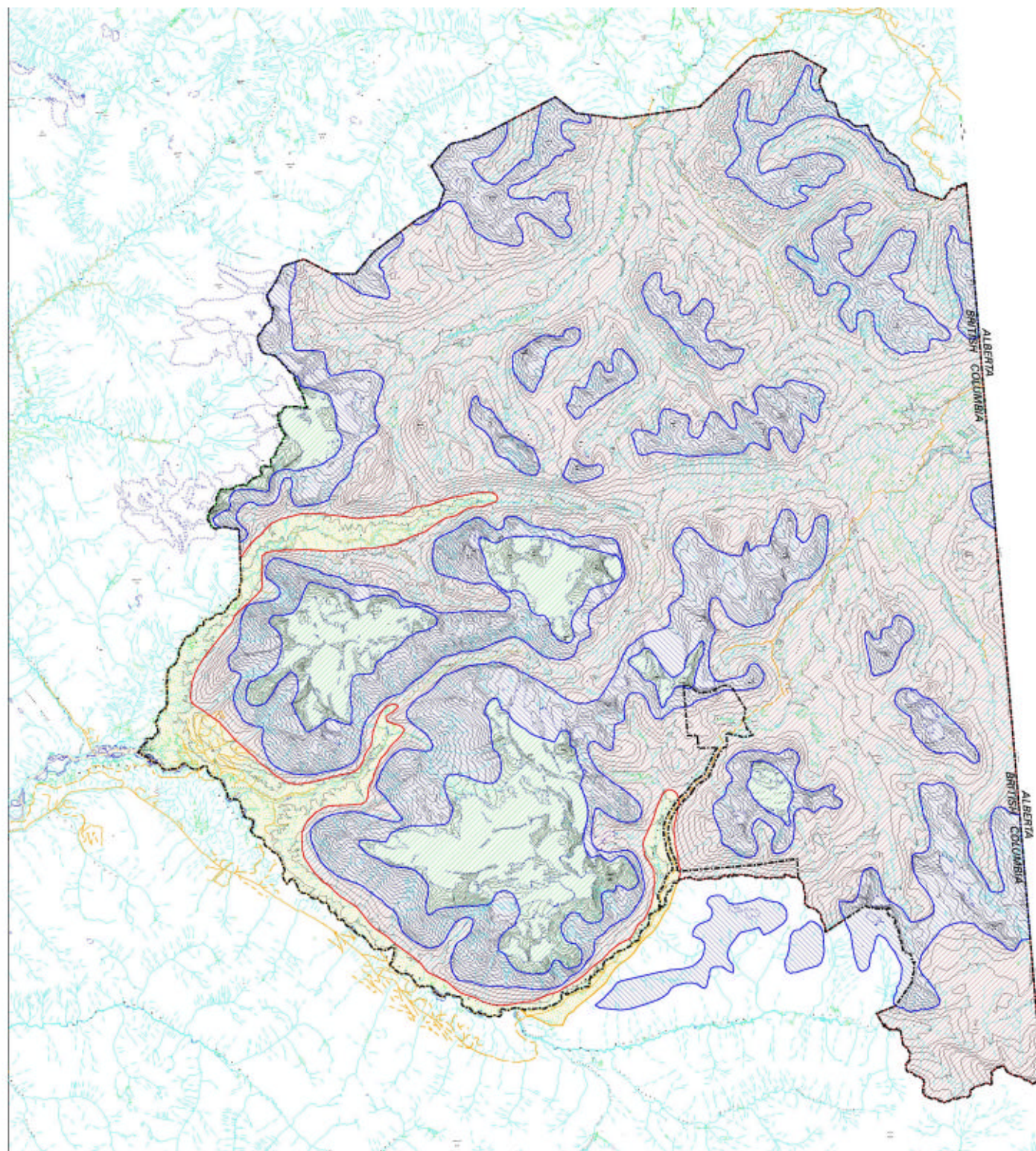


Grizzly Bear Habitat Kakwa Park



Grizzly

There is no specific inventory for grizzly bear in the Kakwa. Habitat classification is based on the professional judgement of wildlife biologists in Port St. John and Prince George having long familiarity with the area. Canada Land Inventory mapping and BC Biophysical mapping were referenced, but all biologists considered both erroneous especially for the part of the Kakwa within the Front Ranges Ecosystem.

Grizzly bear and their sign are readily observed throughout the Kakwa, except at the highest elevations dominated by ice and rock and the dry ridge tops in the northeast (Front Ranges Ecosystem). While most of the area is zoned as 'medium' habitat, riparian areas, wet meadows (especially in the subalpine) and south-facing avalanche slopes deserve a 'high' rating.

The wetter lowlands and richer habitats of Jarvis, Kirchi and the McGregor are zoned 'high'.



Projection: Albers
Datum: NAD83
Scale: 1:50000
Created for Mike Martha
September 2011
BC Parks
Prince George District
Location: c/kakwa