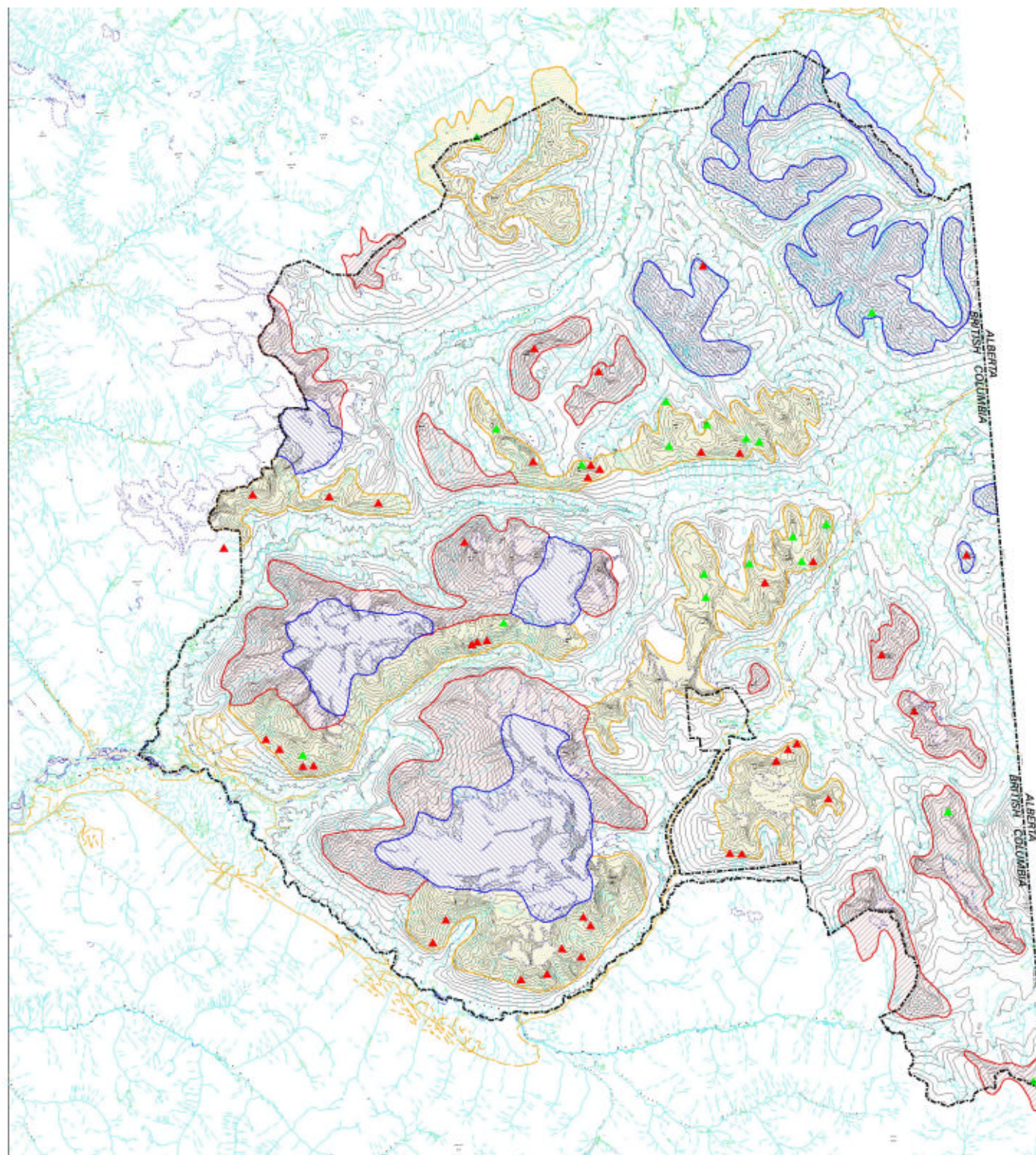



Goat Habitat Kakwa Park



-  High
(used year round by reasonable populations of goat)
-  Medium
(supports small numbers year round or is commonly used seasonally (summer months) by goats but winter elsewhere -will contain pockets of high value habitat and areas of low value)
-  Low
(high elevations (mostly ice and rock) or at lower elevations in the northeast part of the Park where escape terrain is scarce -may contain small pockets of better habitat and a few scattered goats)
-  Blank
(essentially no resident goats and no potential -may contain sub-leads but none are currently known -will be traversed by migrants)
-  Kakwa Park
-  Road
-  Location of winter sightings
-  Location of summer sightings

Mountain Goat

With few inventories and most of them in winter months, much is unknown about habitats used in different seasons, travel routes, salt licks or trend in population numbers.

There are substantial populations and key wintering sites on the ridges north of Jarvis Creek, lakes north of McCreary Pass, Kakwa Lake, south of Mt. St. Alexander, north of Kitchi Creek and near Molokai Mtn. Elsewhere the habitat is less favourable and populations are small and scattered.



Projection: Albers
Datum: NAD83
Scale: 1:65000
Created for Mike Martha
September 2011
BC Parks
Photo George Dietrich
Locator: c3akwv