

PARK BULLETIN









Western Thatch Ant – Please Help Us!!!

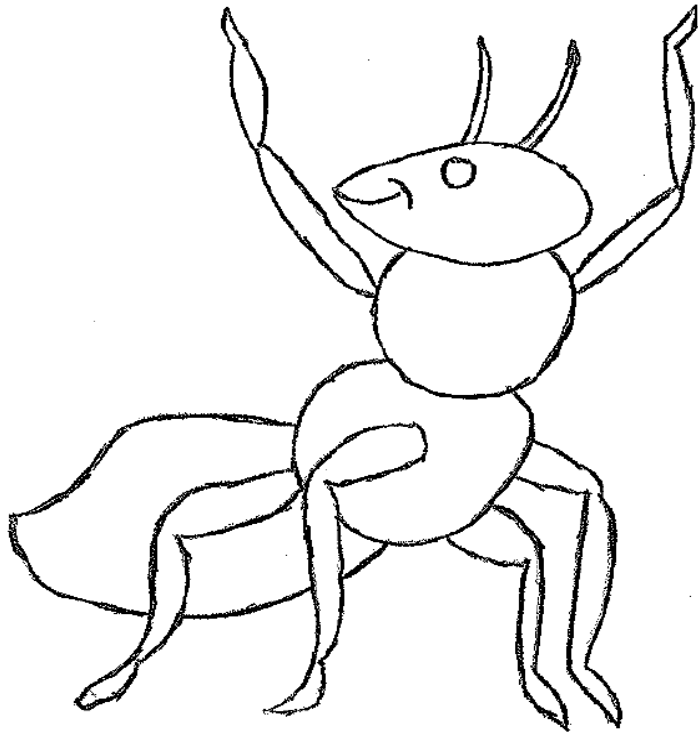


Have you seen any of these large mounds in the park?

DID YOU KNOW?

- ✦ These mounds are made by Western Thatch Ants from Douglas-fir needles, sticks and grass.
- ✦ Western Thatch Ants are good for Rath Trevor because they are fierce predators and keep other insect numbers low.
- ✦ Unfortunately, these ants can also be a pest to humans because they enjoy our food and may bite if threatened. They are also known as Nature's Scavengers.
- ✦ You shouldn't disturb Western Thatch Ant nests as they will bite and could leave a stinging sensation on your skin. If this happens, wash the area around the bite.
- ✦ Western Thatch Ants are social insects. Most colonies are started by a single queen and can grow to have several hundred to several thousand workers.
- ✦ Western Thatch Ants 'farm' aphid colonies to gather their sweet honeydew.

    Please keep all food sealed and stored away when not in use. Use garbage and recycling bins to dispose of waste    



What type of food do you have that the ants may carry away? Draw this Western Thatch Ant carrying it and then make sure you keep your food sealed and stored in a safe place.