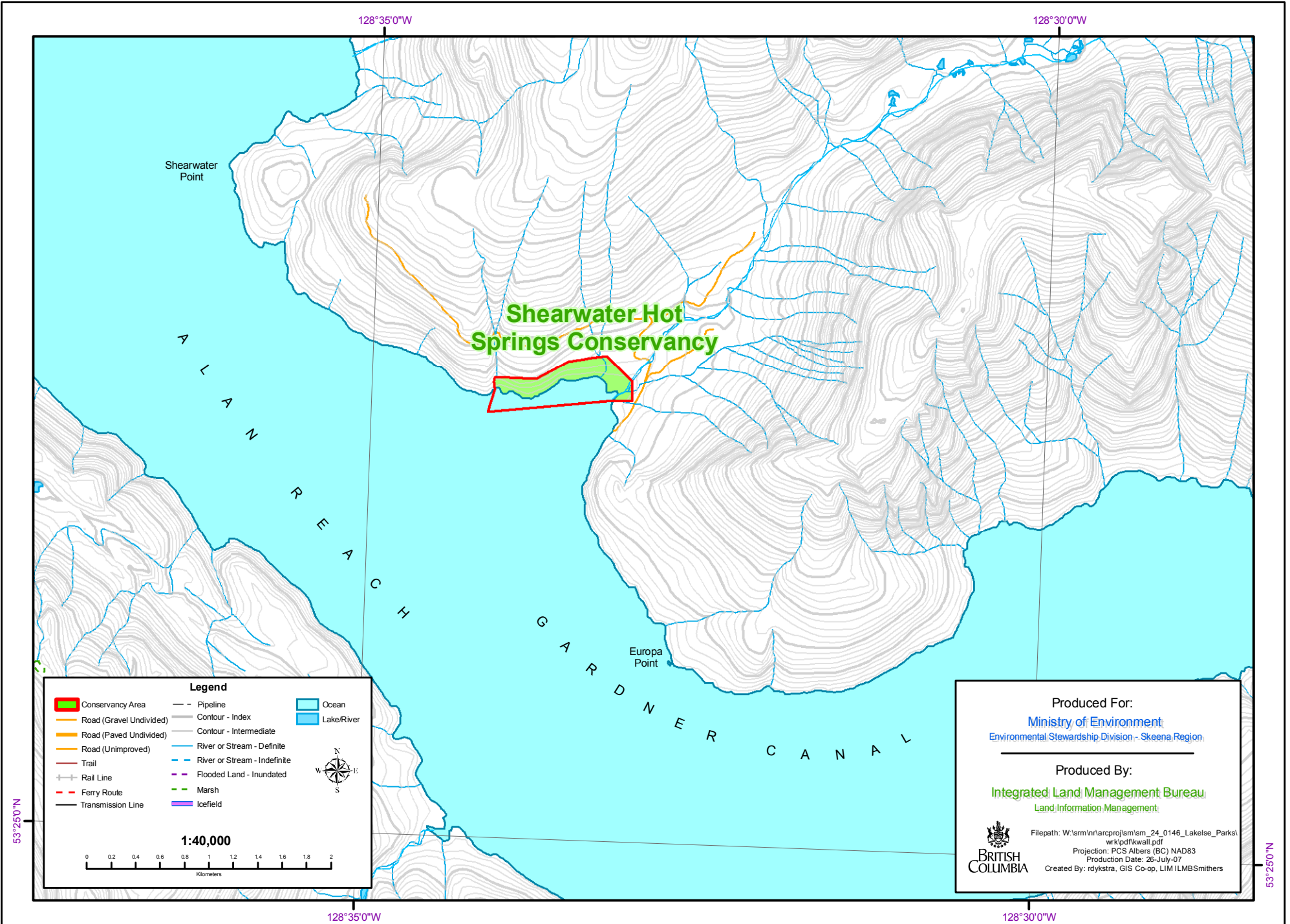


# Shearwater Hot Springs Conservancy



128°35'0"W

128°30'0"W

Shearwater Point

Shearwater Hot Springs Conservancy

A  
L  
A  
N  
R  
E  
A  
C  
H

G  
A  
R  
D  
N  
E  
R  
C  
A  
N  
A  
L

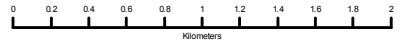
Europa Point

### Legend

- |                         |                              |            |
|-------------------------|------------------------------|------------|
| Conservancy Area        | Pipeline                     | Ocean      |
| Road (Gravel Undivided) | Contour - Index              | Lake/River |
| Road (Paved Undivided)  | Contour - Intermediate       |            |
| Road (Unimproved)       | River or Stream - Definite   |            |
| Trail                   | River or Stream - Indefinite |            |
| Rail Line               | Flooded Land - Inundated     |            |
| Ferry Route             | Marsh                        |            |
| Transmission Line       | Icefield                     |            |



1:40,000



Produced For:  
**Ministry of Environment**  
Environmental Stewardship Division - Skeena Region

Produced By:  
**Integrated Land Management Bureau**  
Land Information Management



Filepath: W:\srm\m\arcproj\sm\sm\_24\_0146\_Lakelse\_Parks\wrk\pdf\kwall.pdf  
Projection: PCS Albers (BC) NAD83  
Production Date: 26-July-07  
Created By: rdykstra, GIS Co-op, LIM ILMBSmithers

53°25'0"N

128°35'0"W

128°30'0"W

53°25'0"N