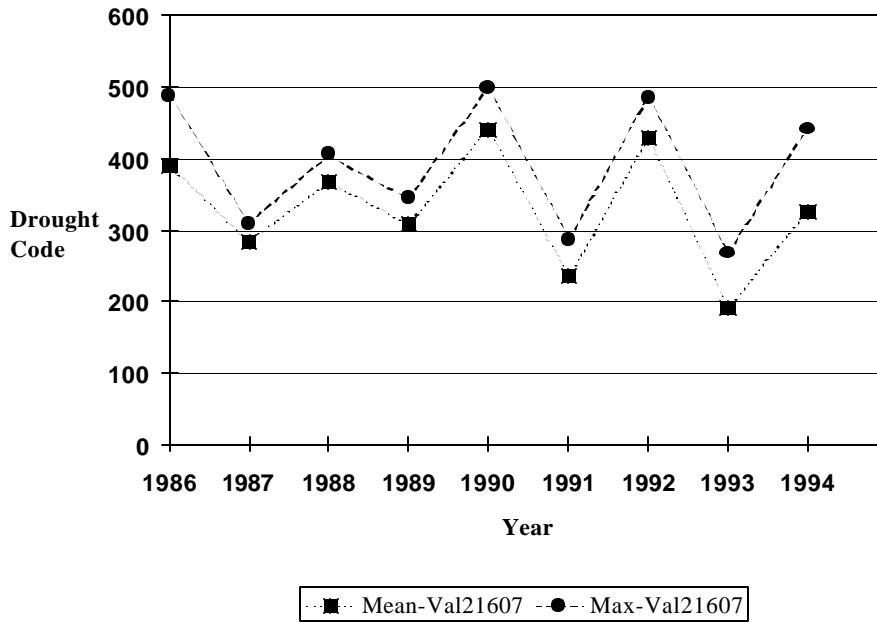
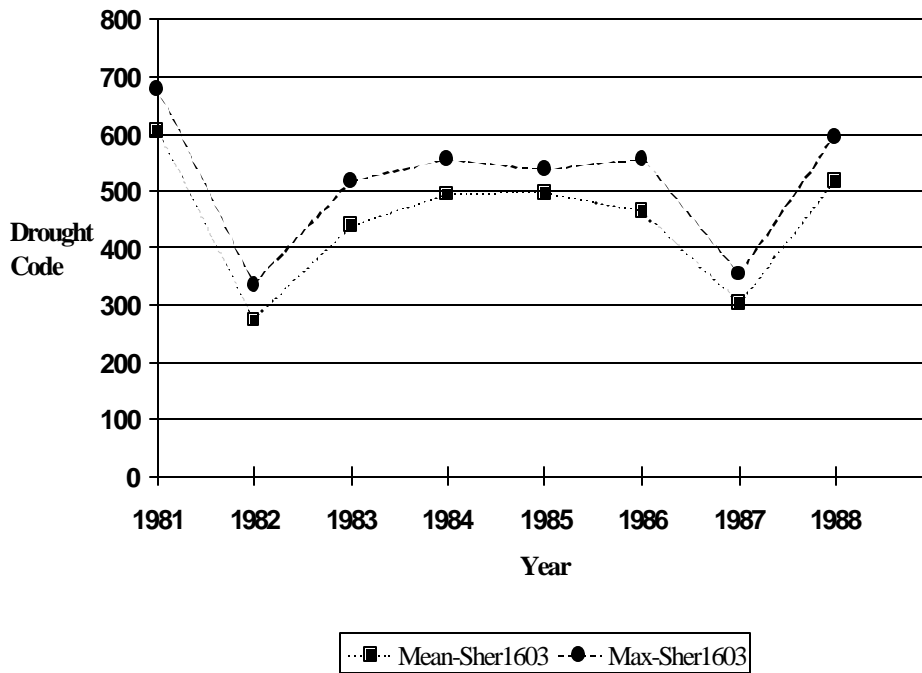


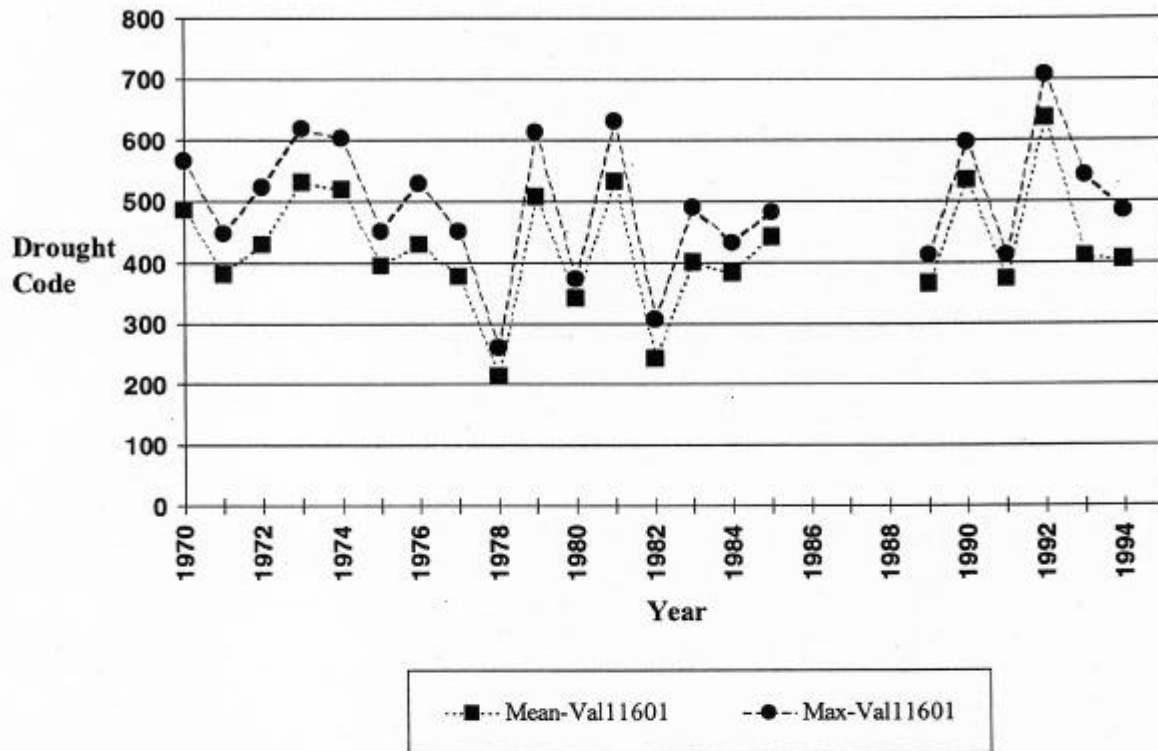
**Appendix 2. Mount Robson Provincial Park Fire Weather Data Summary  
(data provided by B.A. Blackwell and Associates Ltd.)**



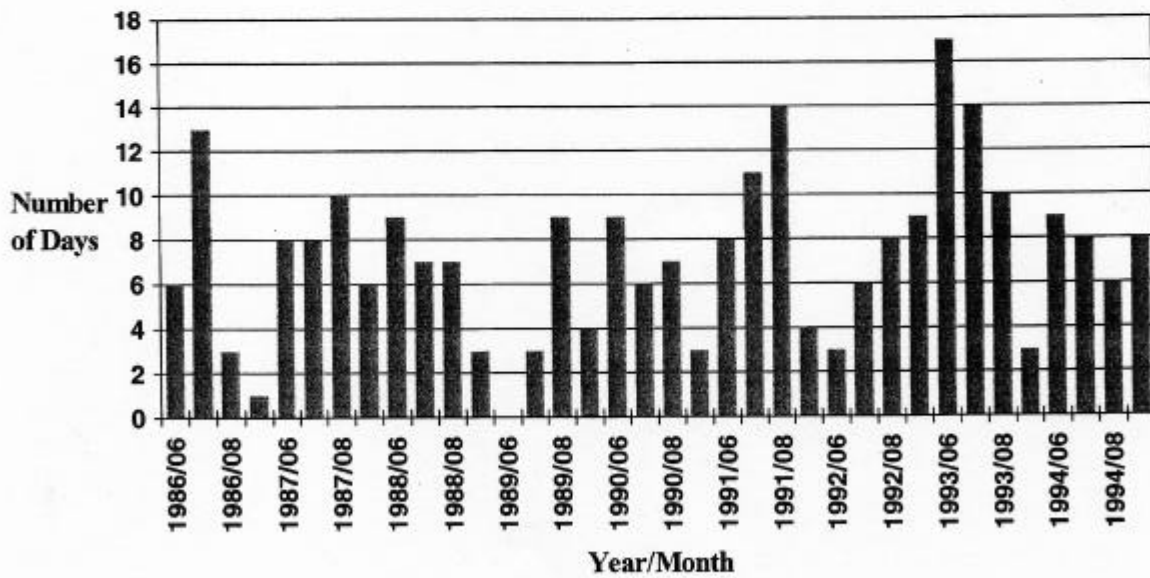
Mean and maximum August Drought Code for Station Val21607, 1986-1994



Mean and maximum August Drought Code for Station Sher1603, 1981-1988

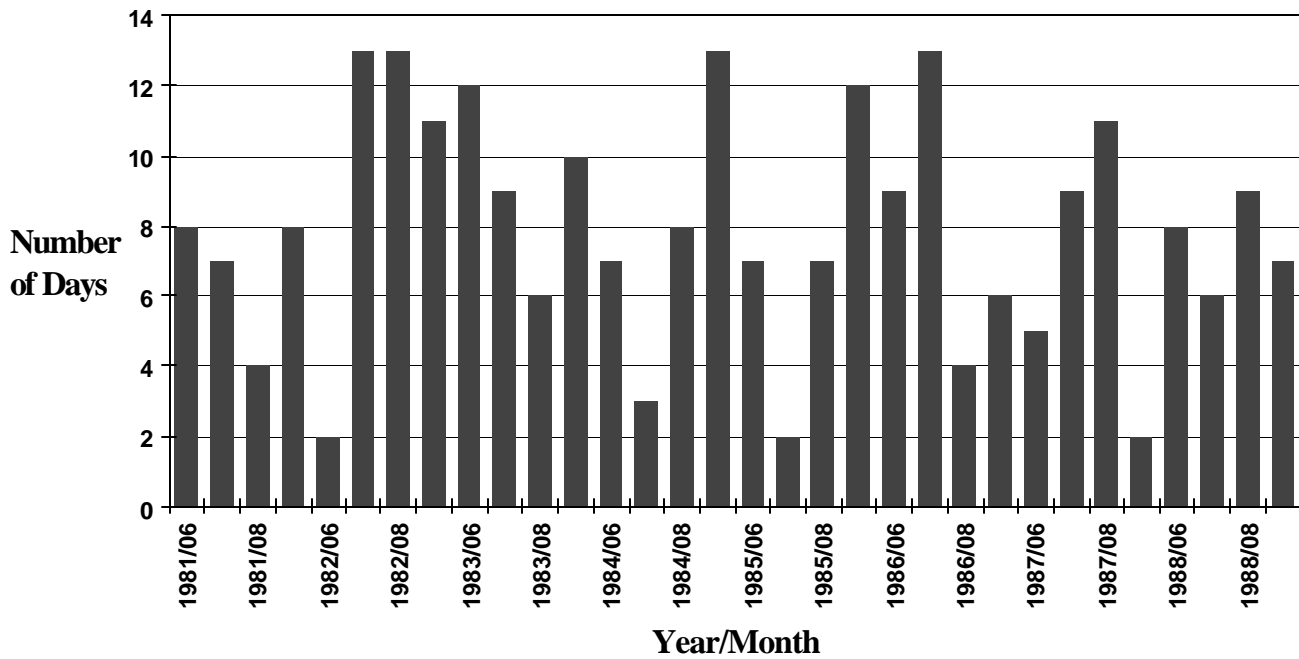


Mean and maximum August Drought Code for Station Val11601, 1970-1994

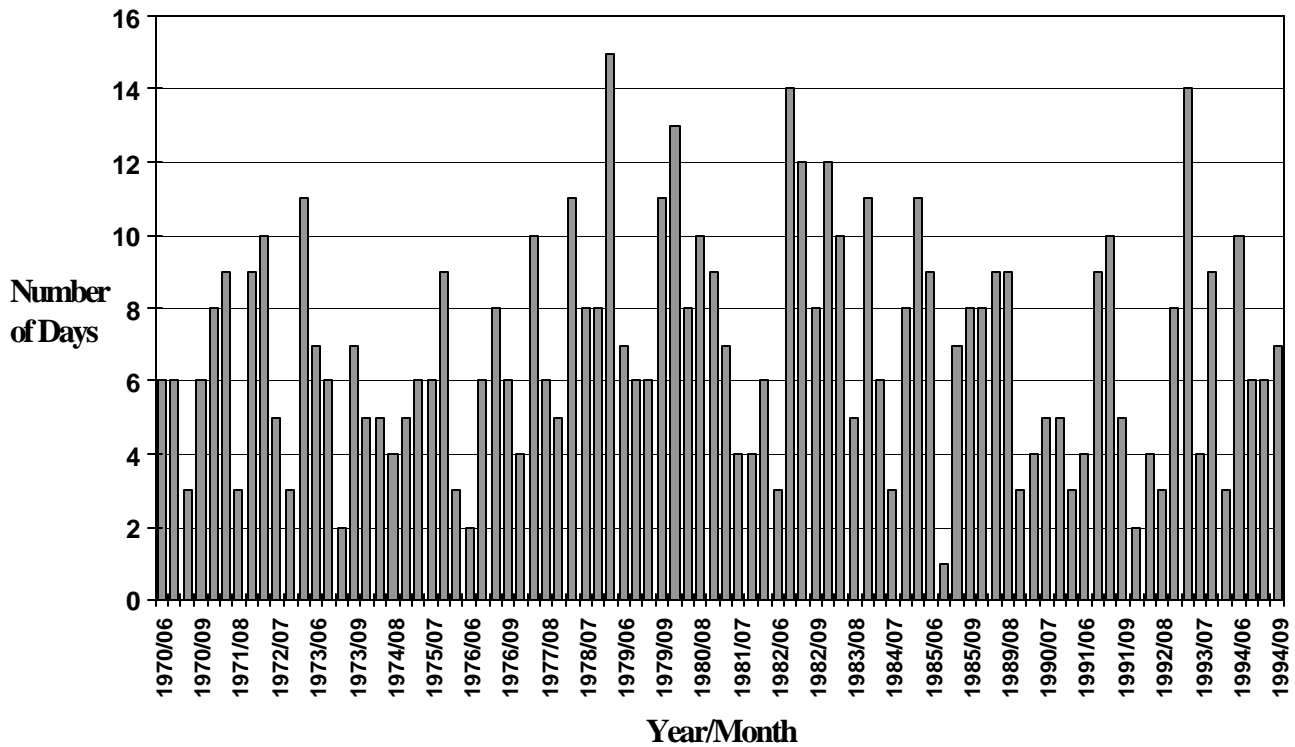


Number of days/month with rainfall >1.5mm for Station Val21607, 1986-1994

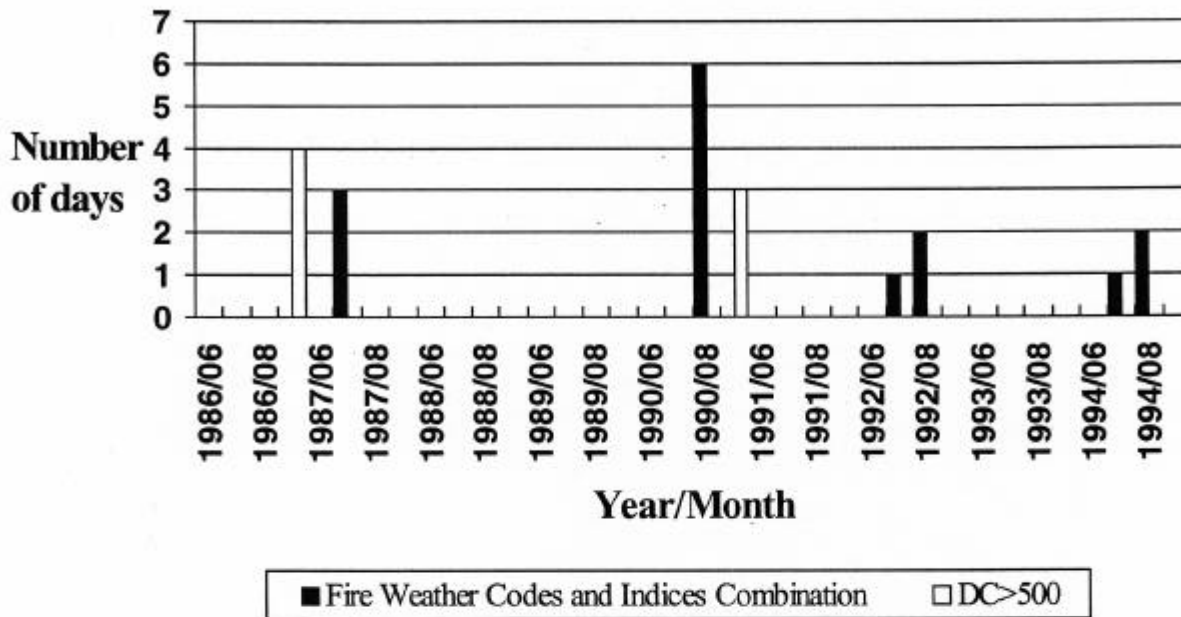
MOUNT ROBSON PROVINCIAL PARK



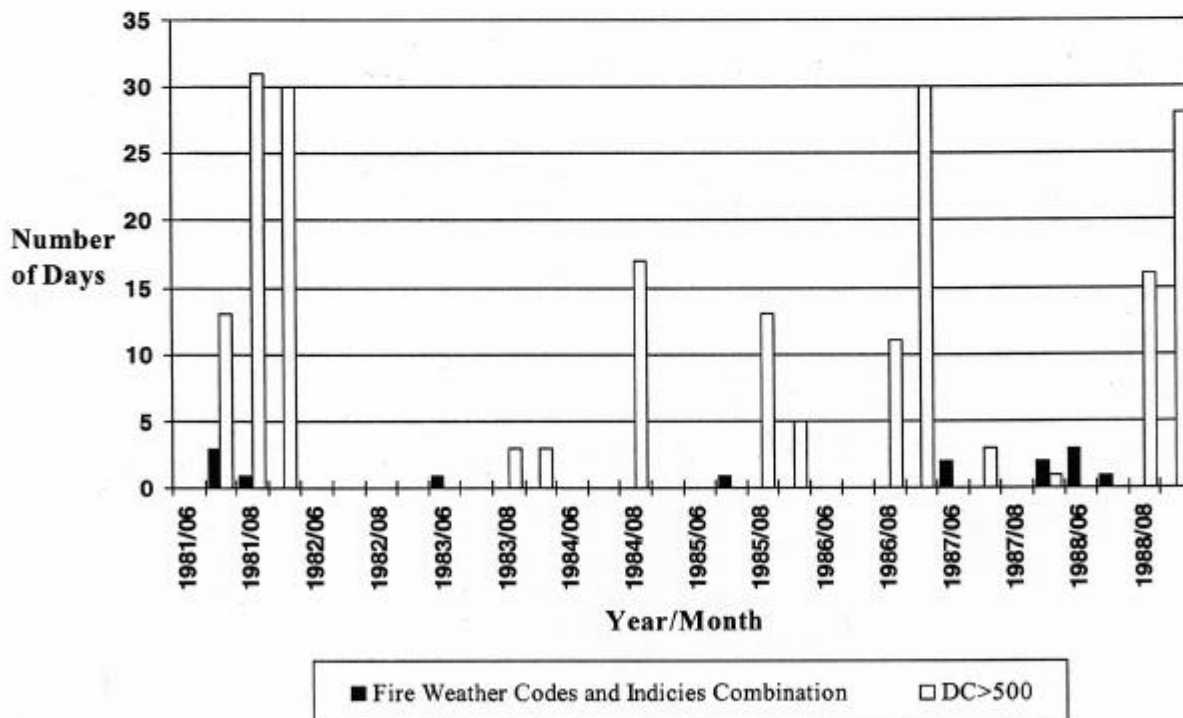
Number of days/month with rainfall >1.5 mm for Station Sher1603, 1981-1988



Number of days/month with rainfall >1.5 mm for Station Val11601, 1970-1994



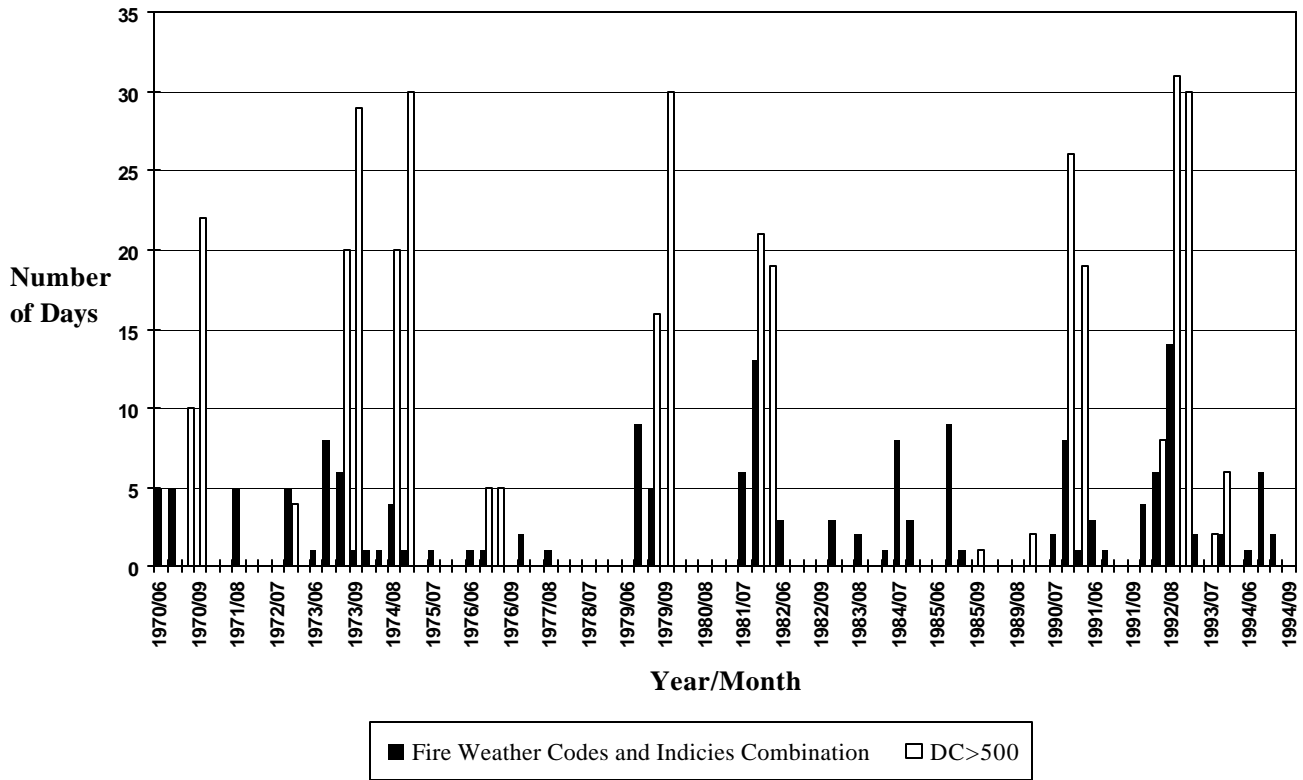
Number of days/month for fire weather codes and indices for significant ignition and spread of fire (FFMC<sup>1</sup> ≥ 88; DMC ≥ 40; DC ≥ 250; ISI ≥ 8 or for D > 500 at Station Val21607, 1986-1994



Number of days/month for fire weather codes and indices for significant ignition and spread of fire (FFMC ≥ 88; DMC ≥ 40; DC ≥ 250; ISI ≥ 8 or for D > 500 at Station Sher1603, 1981-1988

<sup>1</sup>FFMC = fine fuel moisture code; DMC = diff moisture code; DC = drought code; ISI = initial spread index

MOUNT ROBSON PROVINCIAL PARK



Number of days/month for fire weather codes and indices for significant ignition and spread of fire (FFMC<sup>1</sup> ≥ 88; DMC ≥ 40; DC ≥ 250; ISI ≥ 8 or for D > 500 at Station Val12607, 1970-1994

<sup>1</sup> FFMC = fine fuel moisture code; DMC = diff moisture code; DC = drought code; ISI = initial spread index